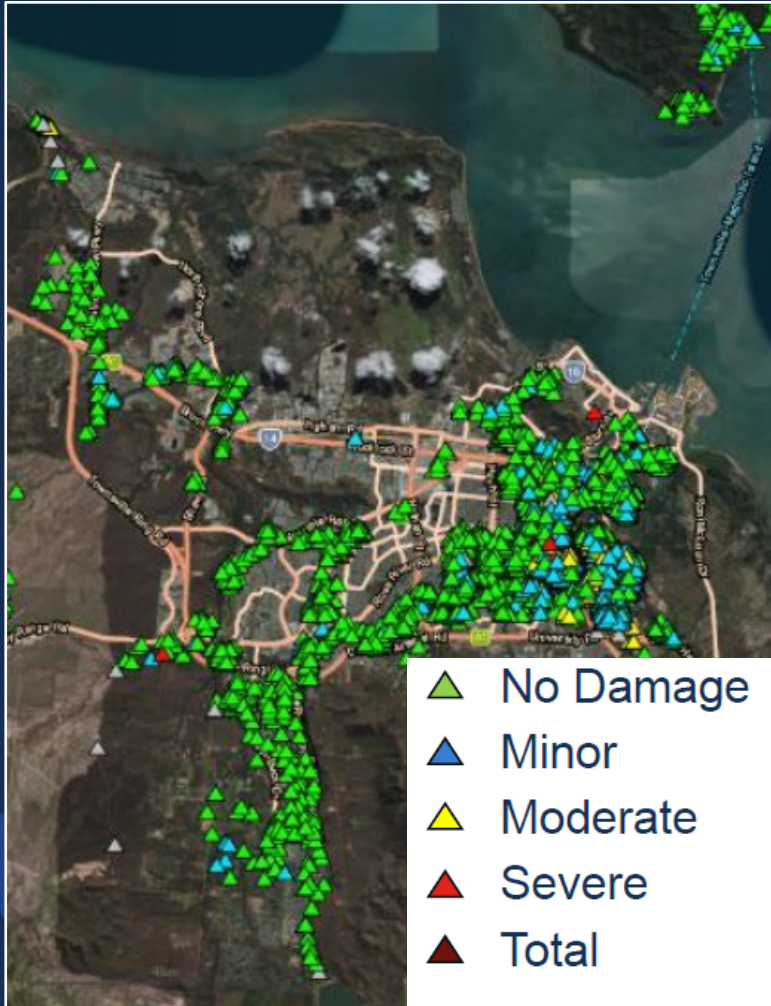


NHRA December Hazardous Webinar



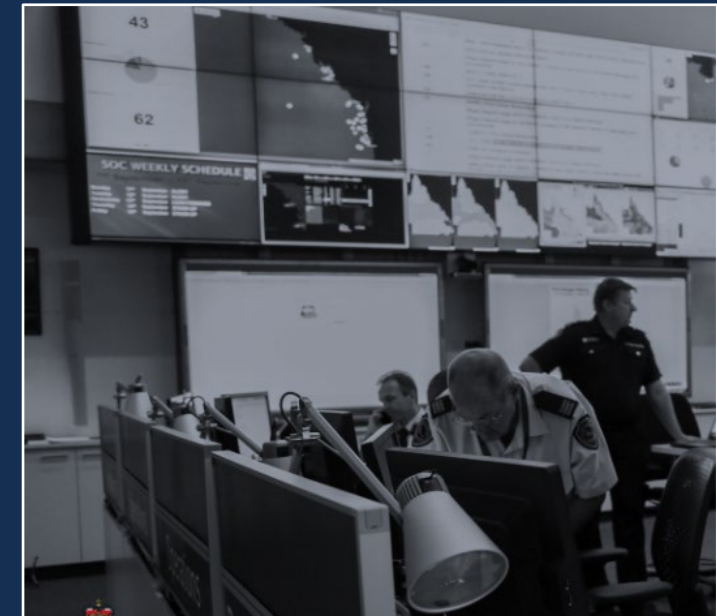
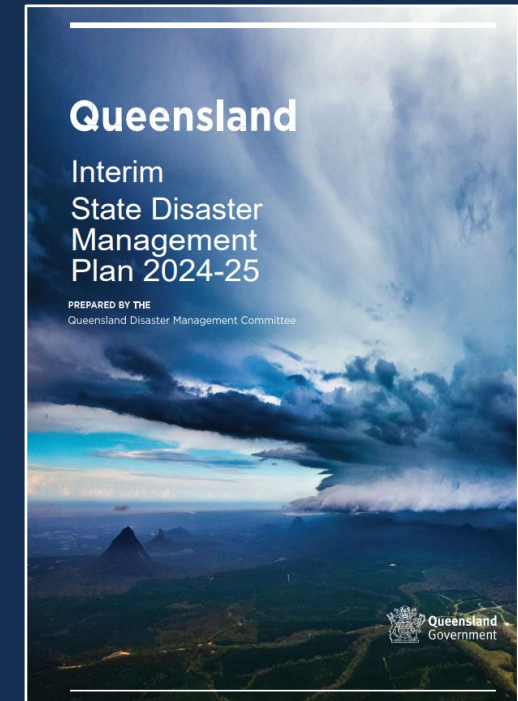
QFD Roles



North Queensland event - Feb



TC Alfred



Before landfall



Rule of thumb

- Winds greater than 120 km/hr, approx. 5% of buildings
- Winds greater than 140 km/hr, approx. 10-20% of buildings

Respect

Integrity

Courage

Loyalty

Trust



After landfall

- Water ingress
 - Fire safety
 - False fire alarms were 2.08 times higher than average in the Gold Coast and Bayside Brisbane.
 - Calls for genuine fires and emergencies in the same areas were 1.13 times the average.
- Solar panels

Respect

Integrity

Courage

Loyalty

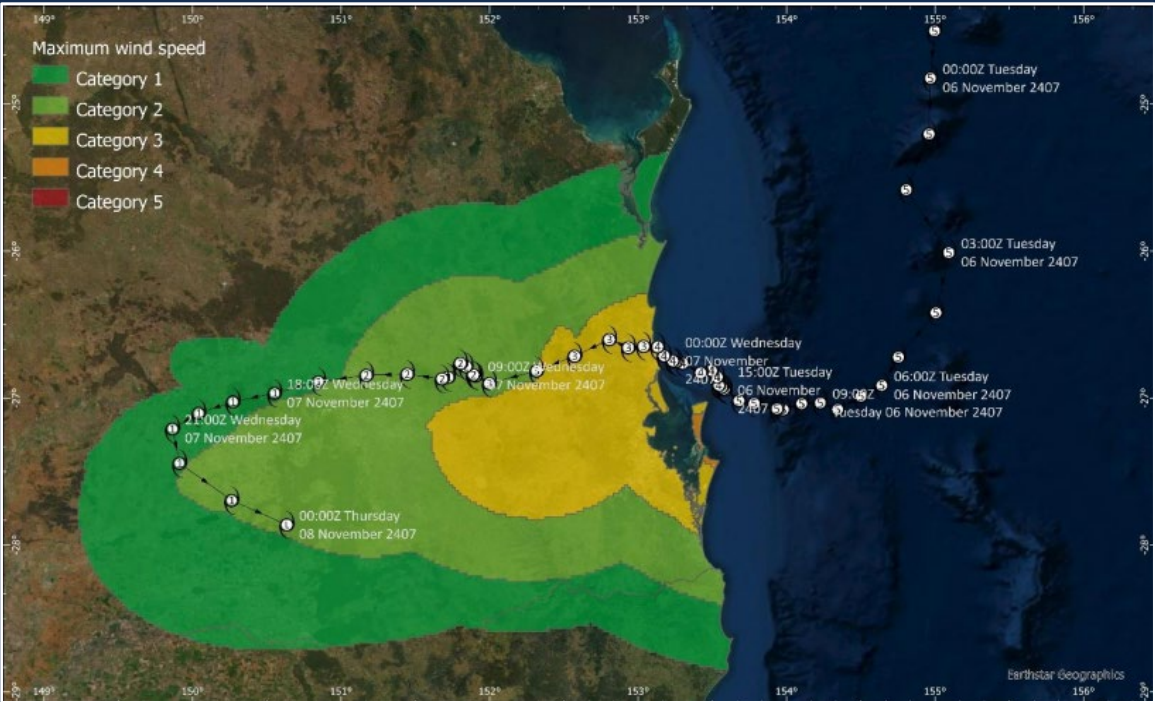
Trust



26 Nov storm

Now what?

- What if?
- Are we ready?



Regional wind field for scenario 020-07522

Table 8-3: Indicative building counts of damage state by local government area for scenario 3 (020-07522).

	Negligible	Slight	Moderate	Extensive	Complete
Noosa	12,300	7,900	2,800	290	0
Sunshine Coast	39,800	21,100	24,000	16,400	1
Moreton Bay	50,100	33,500	43,300	36,400	5
Brisbane	157,000	111,900	60,600	12,900	0
Redland	14,700	11,900	21,600	15,100	5
Gold Coast	117,800	26,900	3,100	91	0

Respect

Integrity

Courage

Loyalty

Trust

Thank you for your listening

Respect

Integrity

Courage

Loyalty

Trust

