

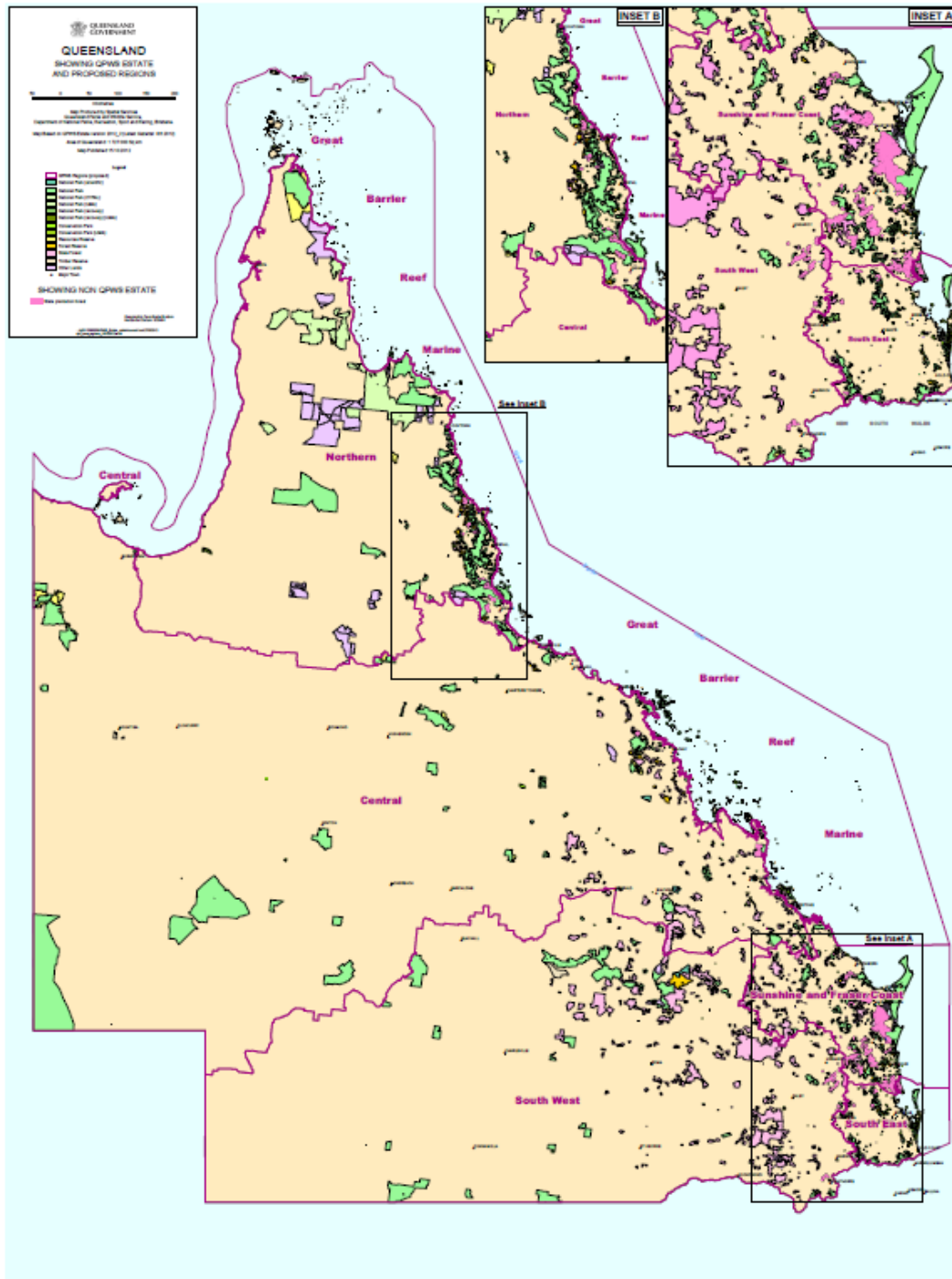
QPWS Fire Management

NAFM

Darwin 2013

Marty McLaughlin
Area Manager
QPWS Central Region





QPWS Regions

- Last year - 6 Terrestrial and 4 Marine Regions
- This year - 6 Regions

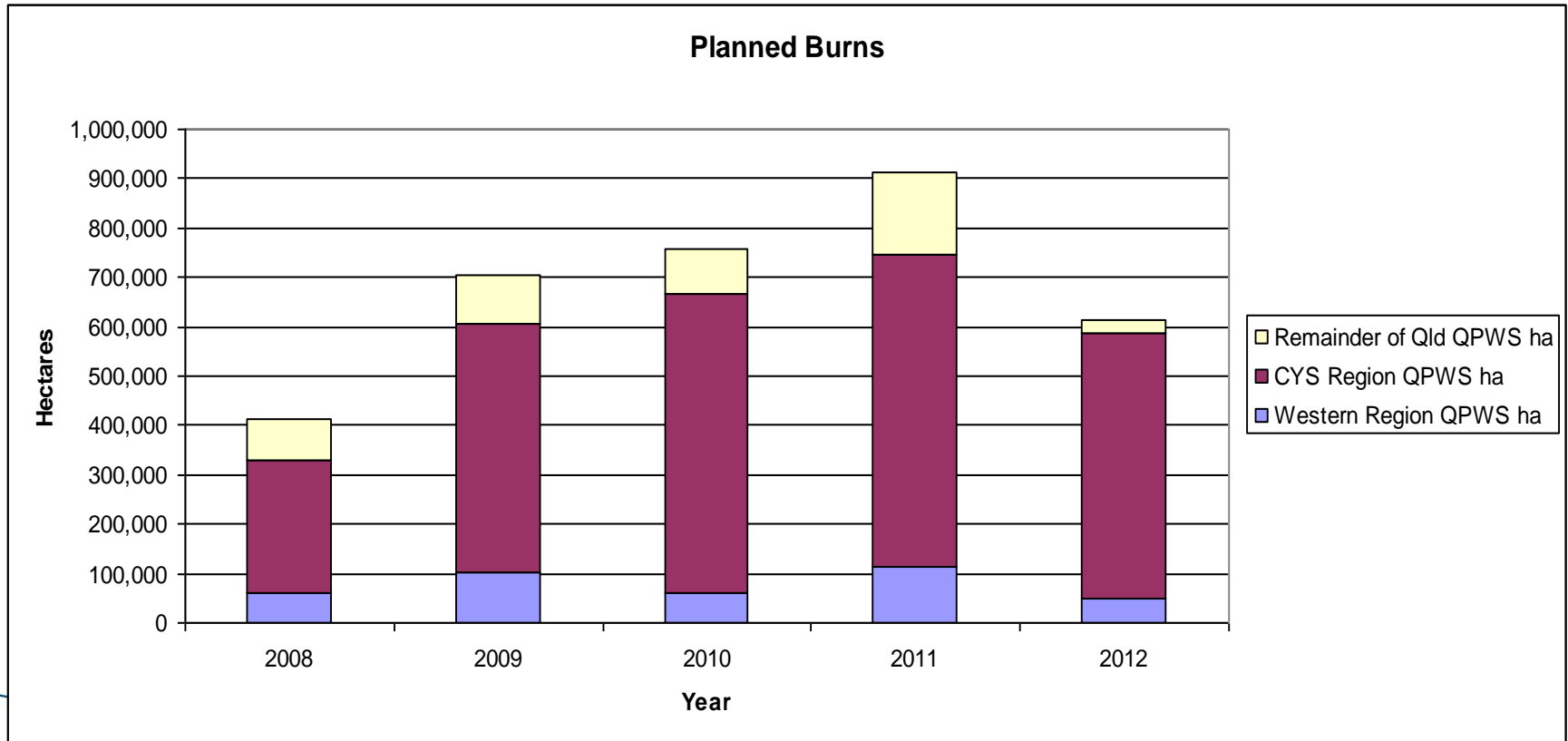
Department of National Parks, Recreation, Sport and Racing

- Tight times
- Legislative amendments – forecast
- Legislative amendments - responsive
- State land review

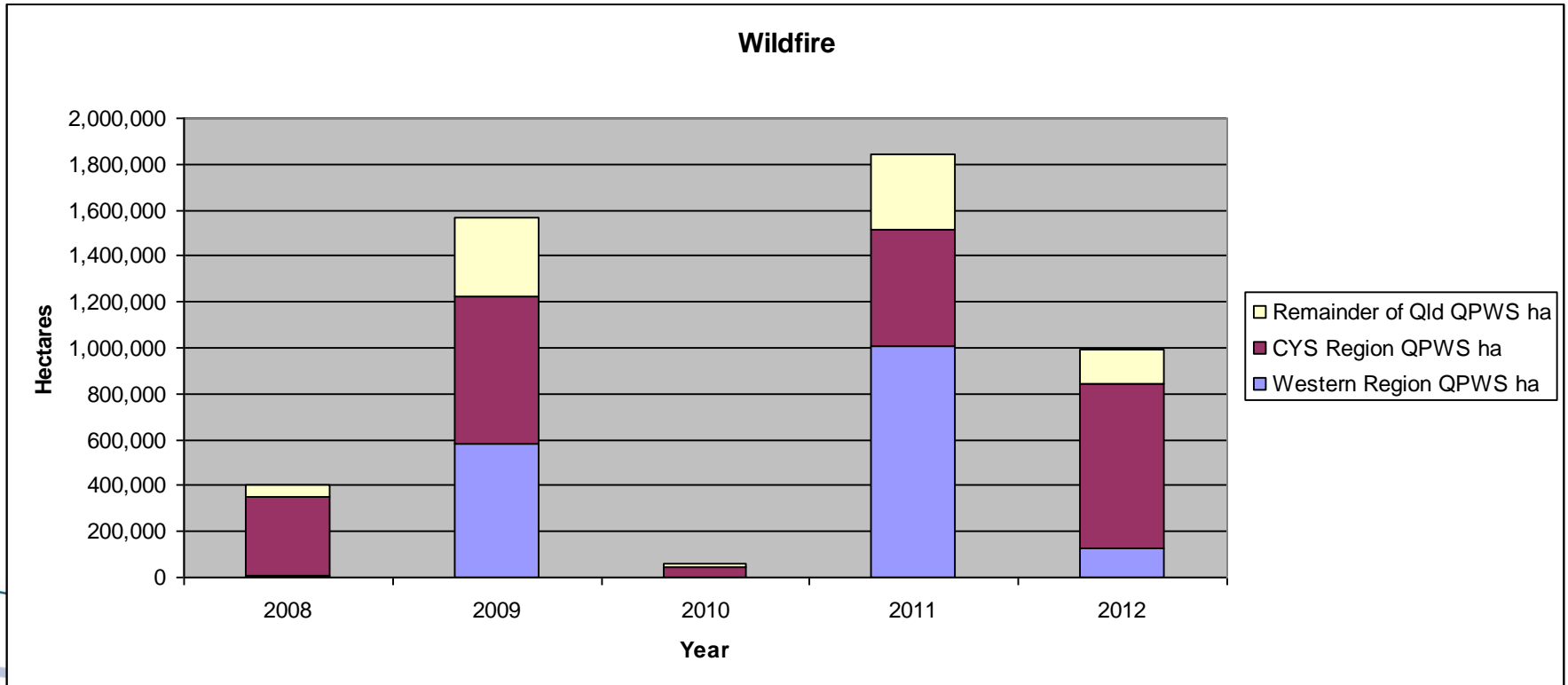
Fire Initiatives

- Bioregional fire guidelines
- Enhanced planned burn program including aerial burning, and
- A training package for staff to effectively plan and respond to wildfire.

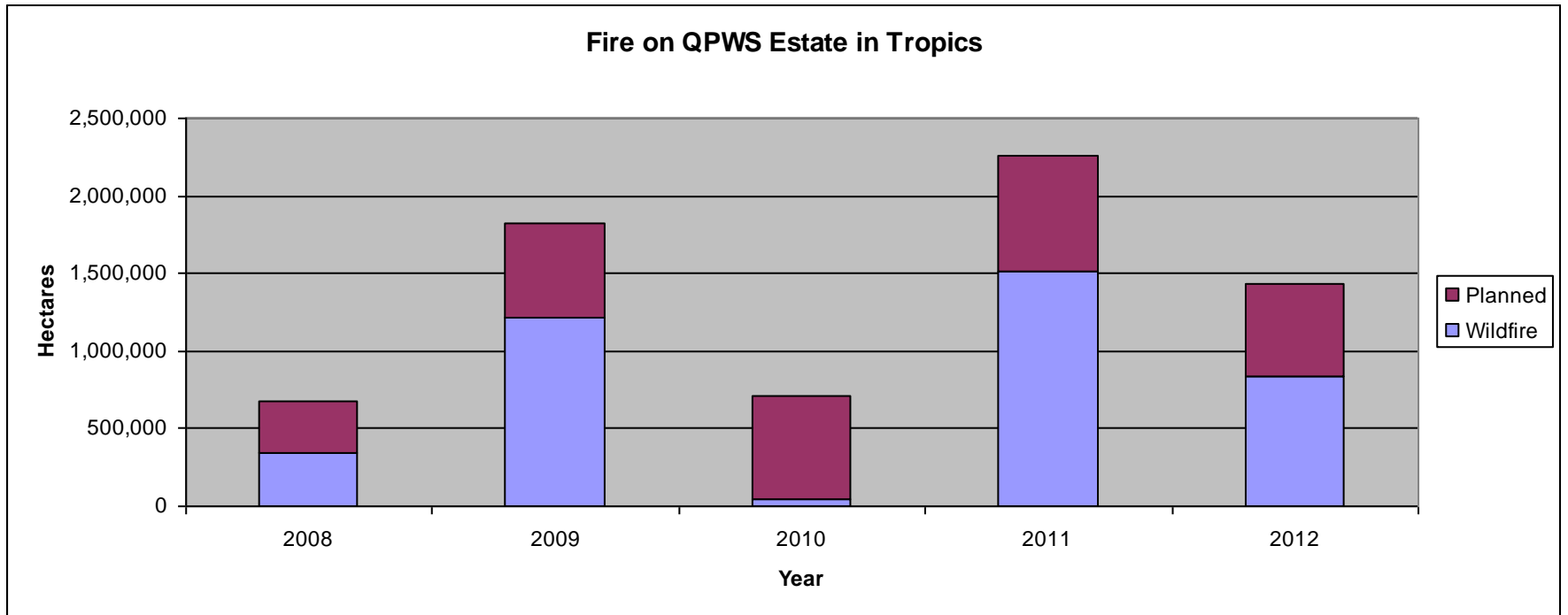
QPWS - Planned Burn Program



QPWS Estate Wildfires



QPWS Fire in the Tropics



2012 Fire Summary

Long cold, dry winter followed by hot and dry start to new year

No monsoon in late 2012 meant fires continued through to late January

Classic fires to flood in Capricornia in January 2013

Second bad year for sandstone fires through central Qld



White Mountains National Park



2013 Outlook

Significant contrast across tropical Qld.

Higher alert – coastal areas Proserpine to Rockhampton

Normal – coastal areas north of Proserpine, Tablelands and Cape York

Lower concern - >50km inland (west of coastal rain influence)

2013 Key Issues

Drought affecting large areas of western and north western Qld.

Poor wet season in tropics but strong influence of south east trades.

Heavy wet season Mackay Coast and Capricornia.

The End

