

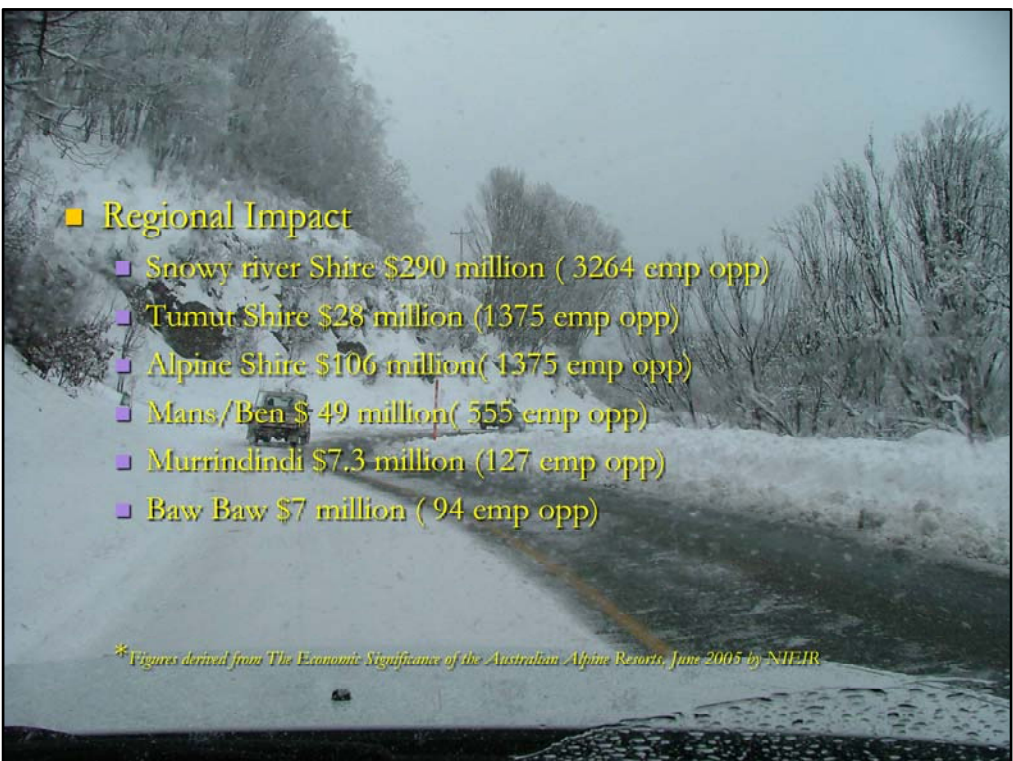


# Alpine Resorts

**PLANNING for PROTECTION**

- 
- 3.9 million Visitor days across NSW & Vic resorts
  - Expenditure in All Resorts
    - \$ 906 Million Direct Costs (gross)– tourist expenses
    - \$ 82 Million Net Annual Investment
  - Total Employment Opportunities
    - Vic & NSW 9600

(NIER figures 2005)



### ■ Regional Impact

- Snowy river Shire \$290 million ( 3264 emp opp)
- Tumut Shire \$28 million (1375 emp opp)
- Alpine Shire \$106 million( 1375 emp opp)
- Mans/Ben \$ 49 million( 555 emp opp)
- Murrindindi \$7.3 million (127 emp opp)
- Baw Baw \$7 million ( 94 emp opp)

*\*Figures derived from The Economic Significance of the Australian Alpine Resorts, June 2005 by NIEIR*

# About Alpine resorts

- Governance

- Legislative

- Framework/Authority

- Development/Environment/  
Audit

- Financial contribution to  
the Community

- National/State/Local

- Recreational Icons

- Heritage Values



## Land manager/Body

- Land management Responsibilities
- Asset Managers
- Infrastructure managers
- Emergency management partners
- Public Safety Risk Accountability

# Land Management



# Fire Risk Perspective

## ■ Winter

- Structural Focus
- High Life Risk Environment

## ■ Summer

- Bushfire Focus
- High Asset Risk Environment

# Fire Risk Structure



# Fire Risk Bushfire





# Bushfire Vulnerability

- Life risk
  - Location and preparedness
- Asset Risk
  - Type
  - Location
  - Resiliency

# Vulnerability

- Asset Type
- Vulnerability
- Location





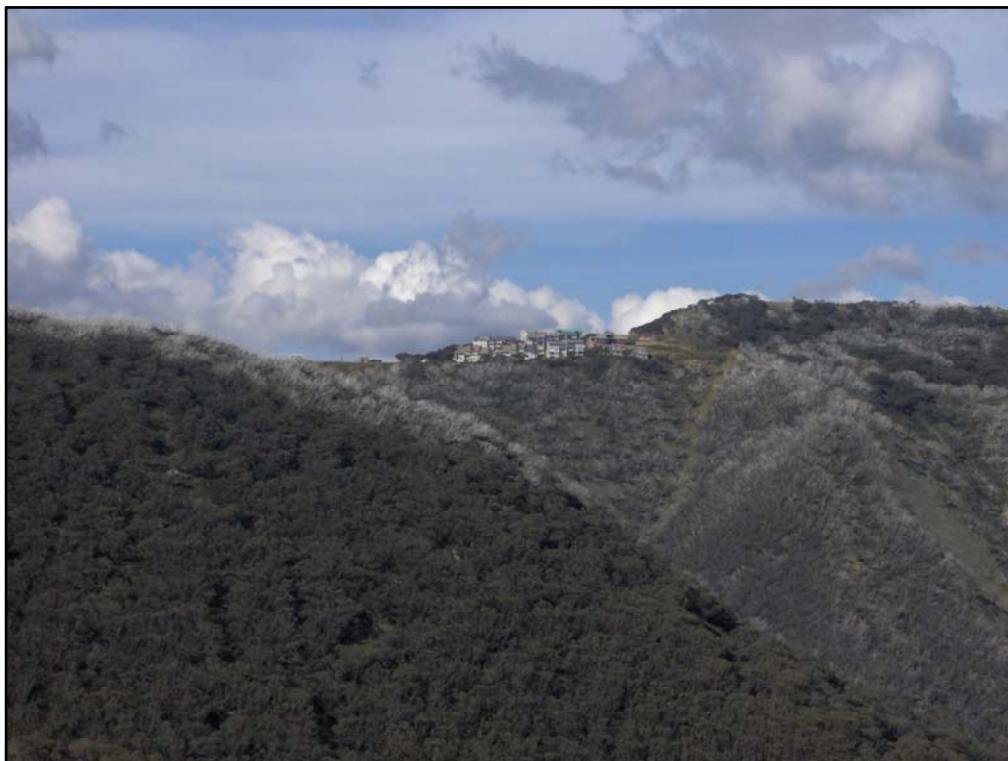
# Ability to Defend - Strategic

- Landscape Scale
  - Type of location of resort
    - Hill top/Ridge Top
    - Basin/Valley
  - Slope
  - Vegetation
    - Type /Continuity

# Landscape Risk

- Location within the Landscape
- Ridge or Escarpment Resort
- Valley / Basin Resort
- Slope & Vegetation





## Ability to Defend - Streetscape

- Site Specific Asset/s
  - Asset Type
  - Vegetation & Proximity
  - Slope
  - Built Type

## Ability to Defend - Streetscape



## Treatments - Reactive

- Fire break construction
- Burning Activity
- Individual property protection
- Chemical fire breaks/protection
- Active defence by response Agencies

# Treatment



## Treatments Reactive



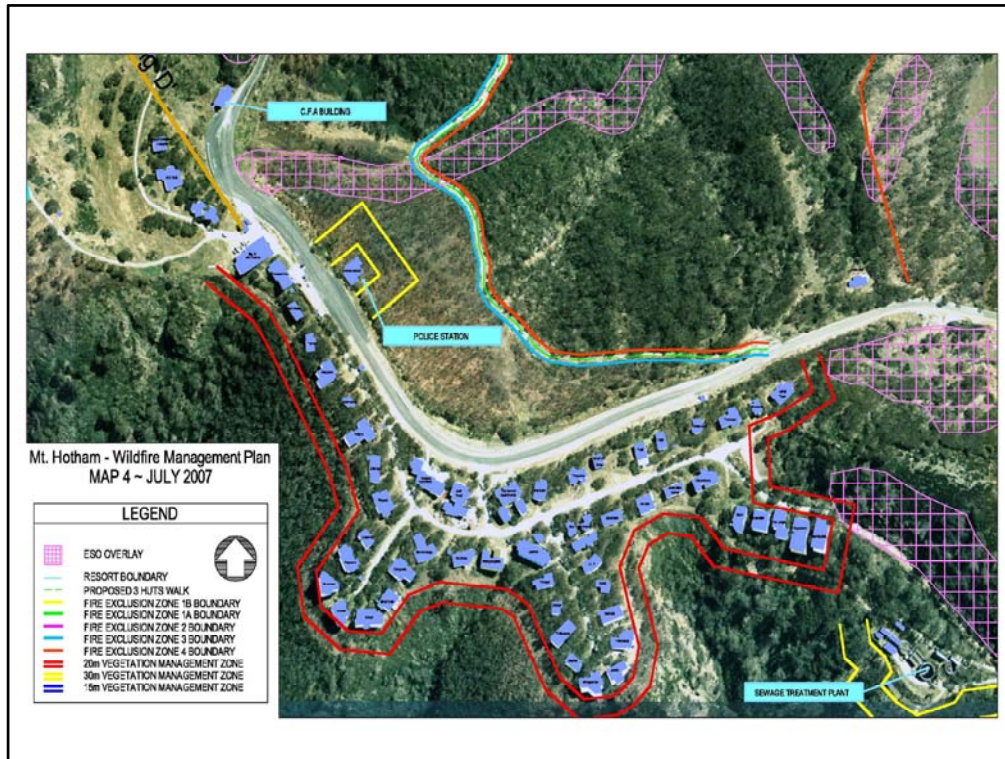
## Pro Active Treatments

- Emergency management Planning
  - Treatments integrated across all agencies /Partners
  - Treatments across all spectrums of emergency management based upon identified risk
  - Treatments in depth

# Treatments Proactive



- Emergency management Plans
  - Integrated across land tenure
  - Integrated within Cost and legislative processes
  - Based upon agreed risk



# Emerging Issues

- Flammability of Alpine vegetation Systems
  - Some burn readily
  - Some exhibit lower flammability
- Building Protection
  - Building Design Verses Building Vulnerability
- Vegetation management
  - Building location & type Verses Vegetation Clearance

# Emerging Issues

- Accountability of Alpine Resort Stakeholders
  - Alpine Resorts Carry land Management Status
    - Passive/Active Roles across EM/Public Safety
  - Planning Regulators and Managers
  - Emergency Management Agencies
  - Investment Bodies and land developers
  - Culture v Risk Acceptability v Recreational Pursuit

## Summery

- Resorts Play an important part in our society
- Resorts can be at High levels of Vulnerability from Bushfire
- Integrated approach to Emergency management is Essential
  - Built, Planning ,Environmental, Development, Emergency Agency Groups; need a common platform of risk to guide them
- Development of Knowledge Base

# Questions