

Bushfires NT

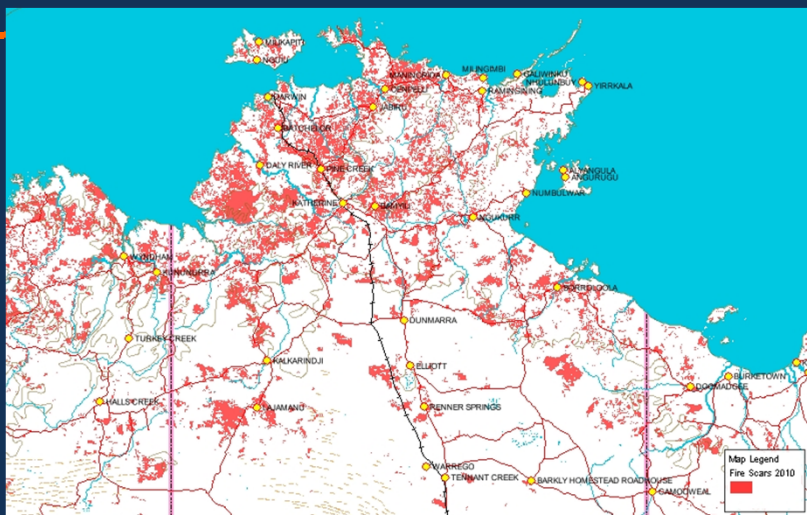
2011 Report to NAFM Group



Wildfire Prevention is the Intention

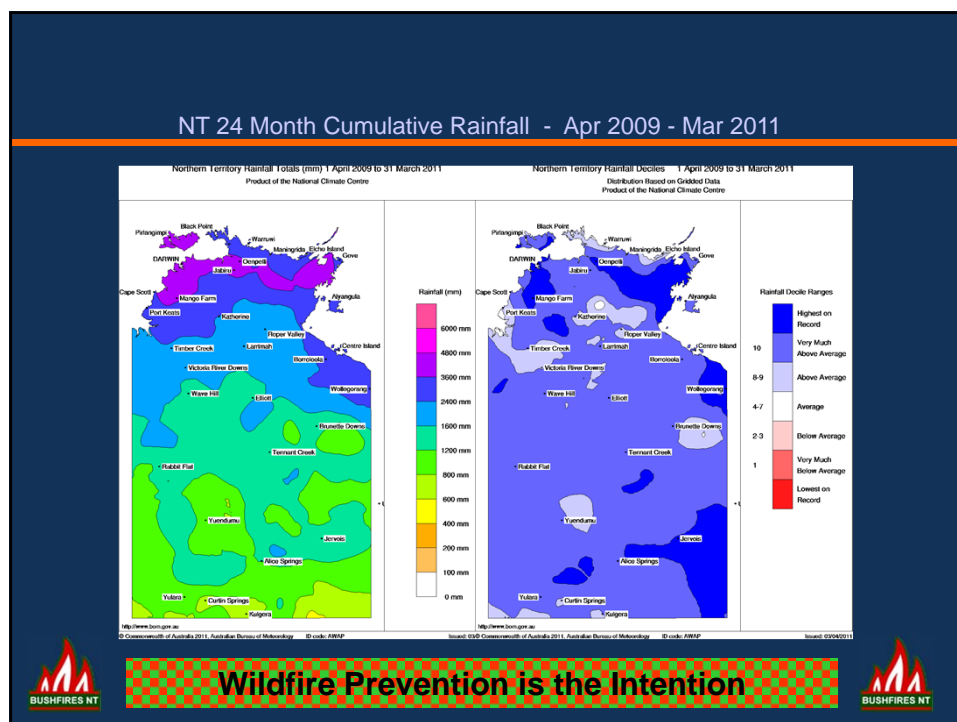
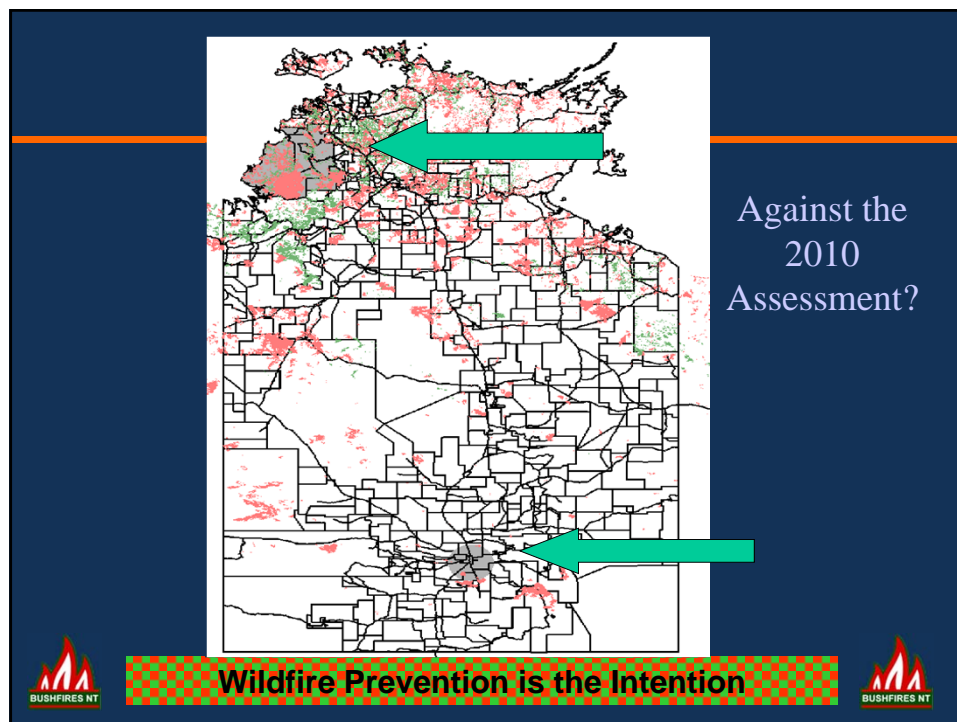


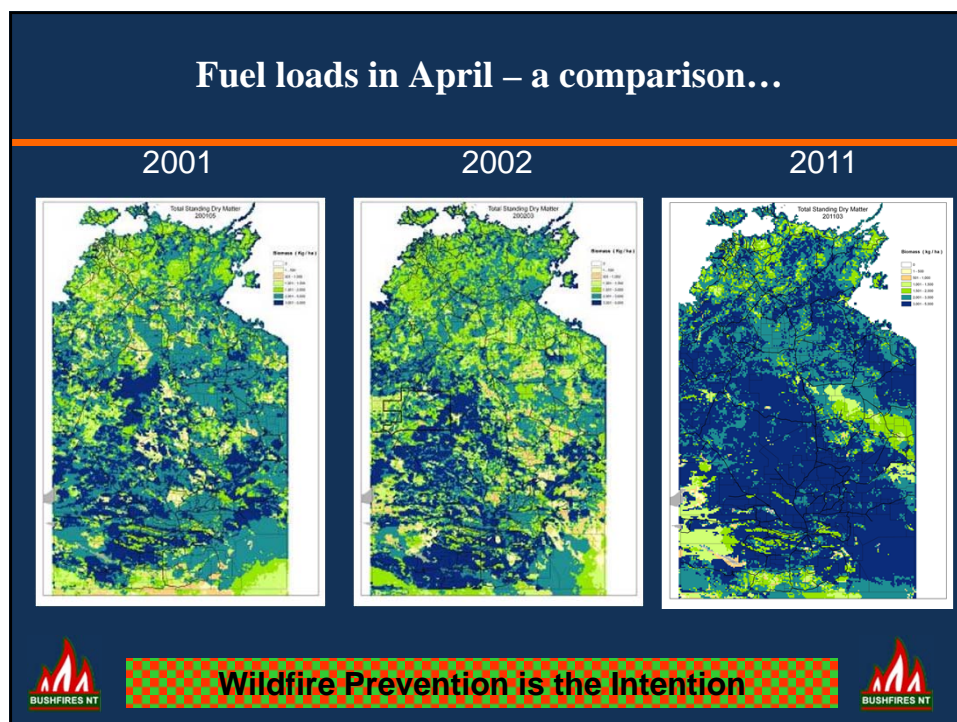
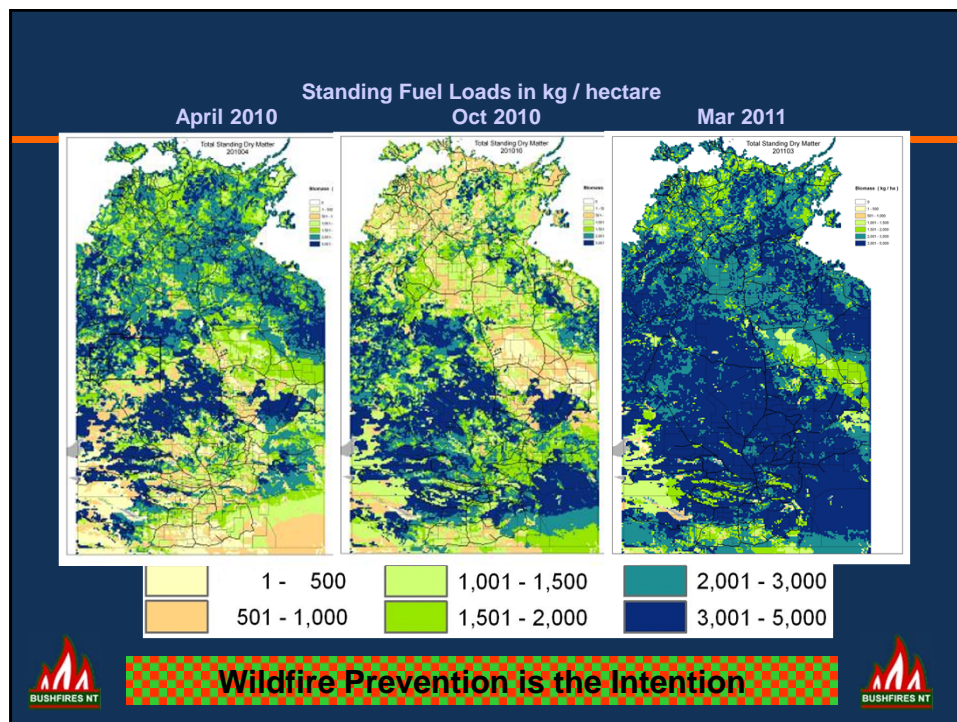
Fire Scars 2010



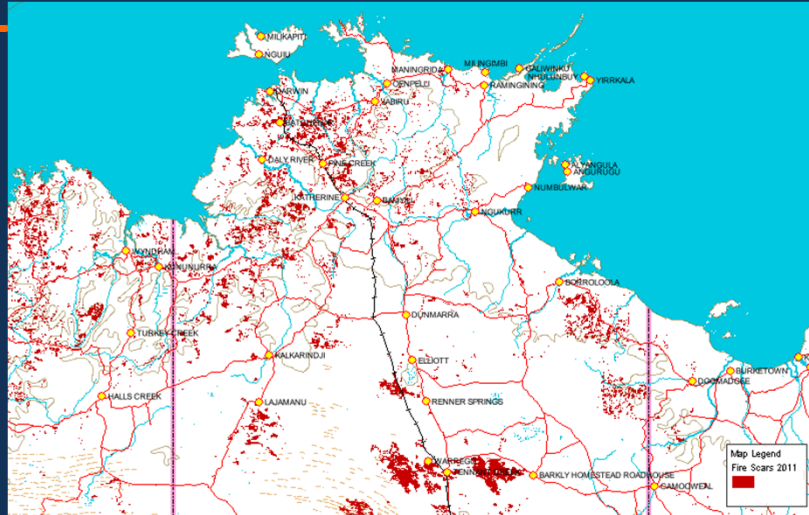
Wildfire Prevention is the Intention







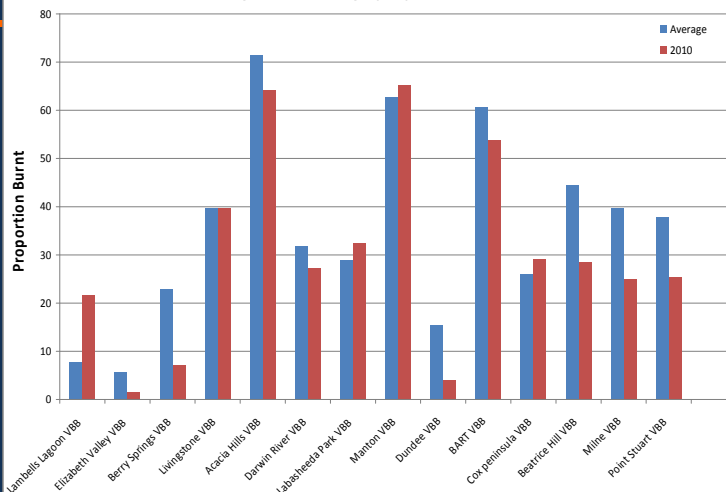
Fire Scars to June 2011



Wildfire Prevention is the Intention



Figure 4: Average proportion burnt Vs 2010



Wildfire Prevention is the Intention



Issues 2011

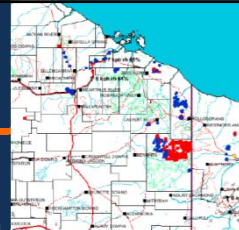
- Record Wet / Long Wet
 - Record fuel loads
 - Access to land still difficult
 - Slow installation of fire breaks & fuel mgt.
 - Rural community 'hazard fatigue'
- Fire across whole NT
 - Reduced ability to rotate staff
 - Limited IMTs – will struggle to attend multiple fires
- Staffing shortages
 - Structural organisational issues...



Wildfire Prevention is the Intention



Issues 2011



- Top End Strategic burning nearly complete
- CO_{2e} Projects going well...
- Injection of \$ into community engagement
- Movement on staffing
- Structural resourcing review
- Engagement with Whole of Govt
 - All agencies pressed to take action to manage fuel
- Coordinated briefings of CM by both fire agencies



Wildfire Prevention is the Intention

