

Risk on the Interface





Modern Constraints to Bush Fire Management

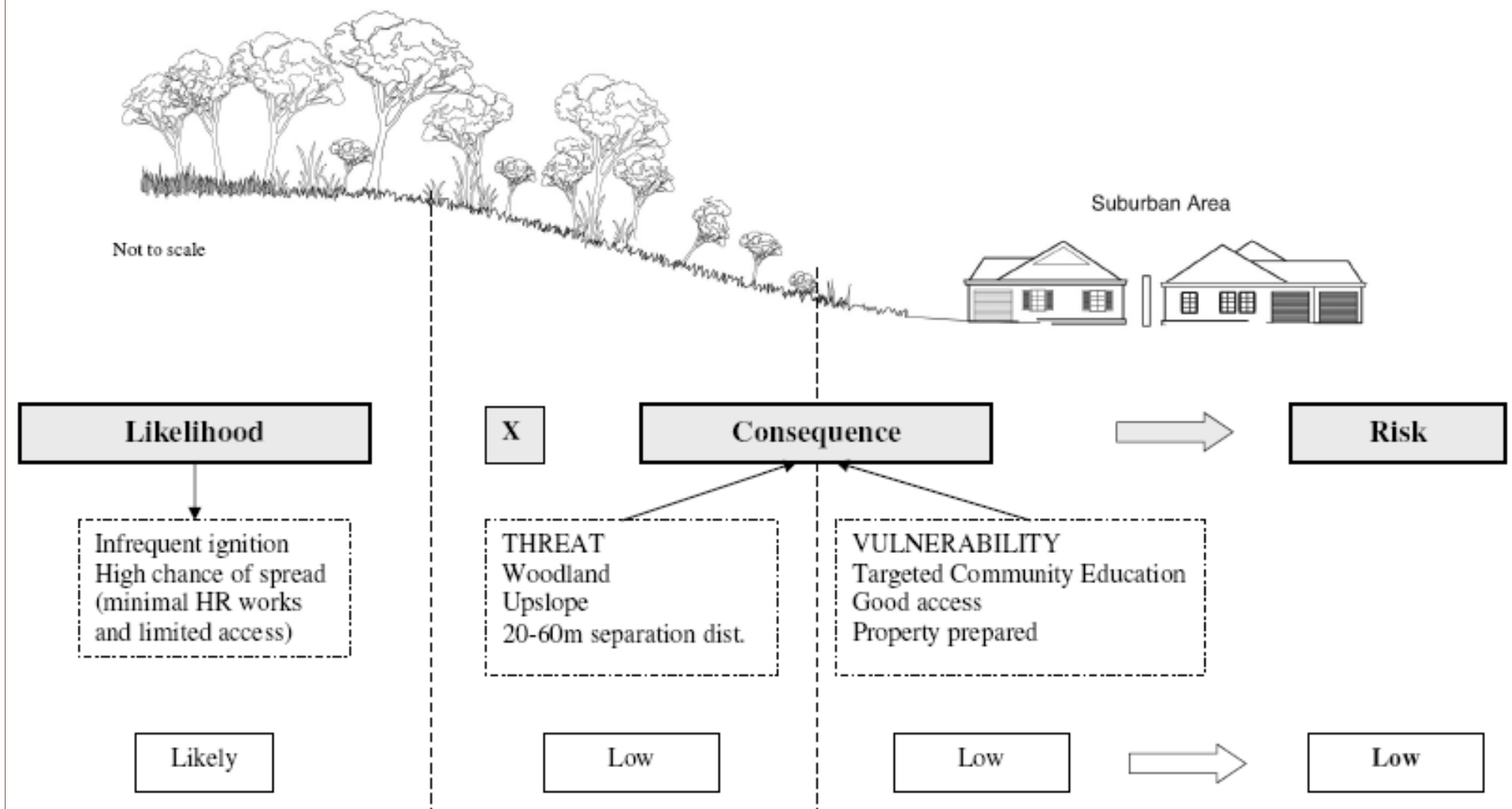
- Huge urban interface
- Past poor planning decisions
- Need to recognise land management objectives
- Absolute need to protect fire fighters
- Community has greater reliance on Government




Overview


- **Appropriate integrated risk planning**
- Managing the fuel
- Land use planning

The Assessment of Risk



Type of Asset	Consequence Assessment	
Economic; Infrastructure, tourist, Water catchment, etc	Level of impact Decision: Implications on economy due to bush fire impact on the asset	Recovery cost Decision: Capacity of the asset to recover from the impact of a bush fire
Environmental	Vulnerability Given: Geographic extent Conservation status	Potential impact of bush fire Given: Constraints relating to bush fire
Cultural	Threat Calculation: -Vegetation -Separation distance -Slope	Vulnerability Decision: Susceptibility of the asset to the impact of fire

- 
- No silver bullet
 - Community must be part of solution
 - Must be able to demonstrate to government and community value.
Properties saved = \$
 - Needs to be tenure blind
 - Must focus on areas of greatest risk not just quick fixes

- 
- Appropriate integrated risk planning
 - **Managing the fuel**
 - Land use planning




Treatment options


- Maintaining asset protection zone (defendable space) by machine or manual methods
- Strategic burning adjacent to APZ to reduce fire impact as approaching assets
- Often is limited by terrain in urban areas which reduces treatment options (steep slope etc)

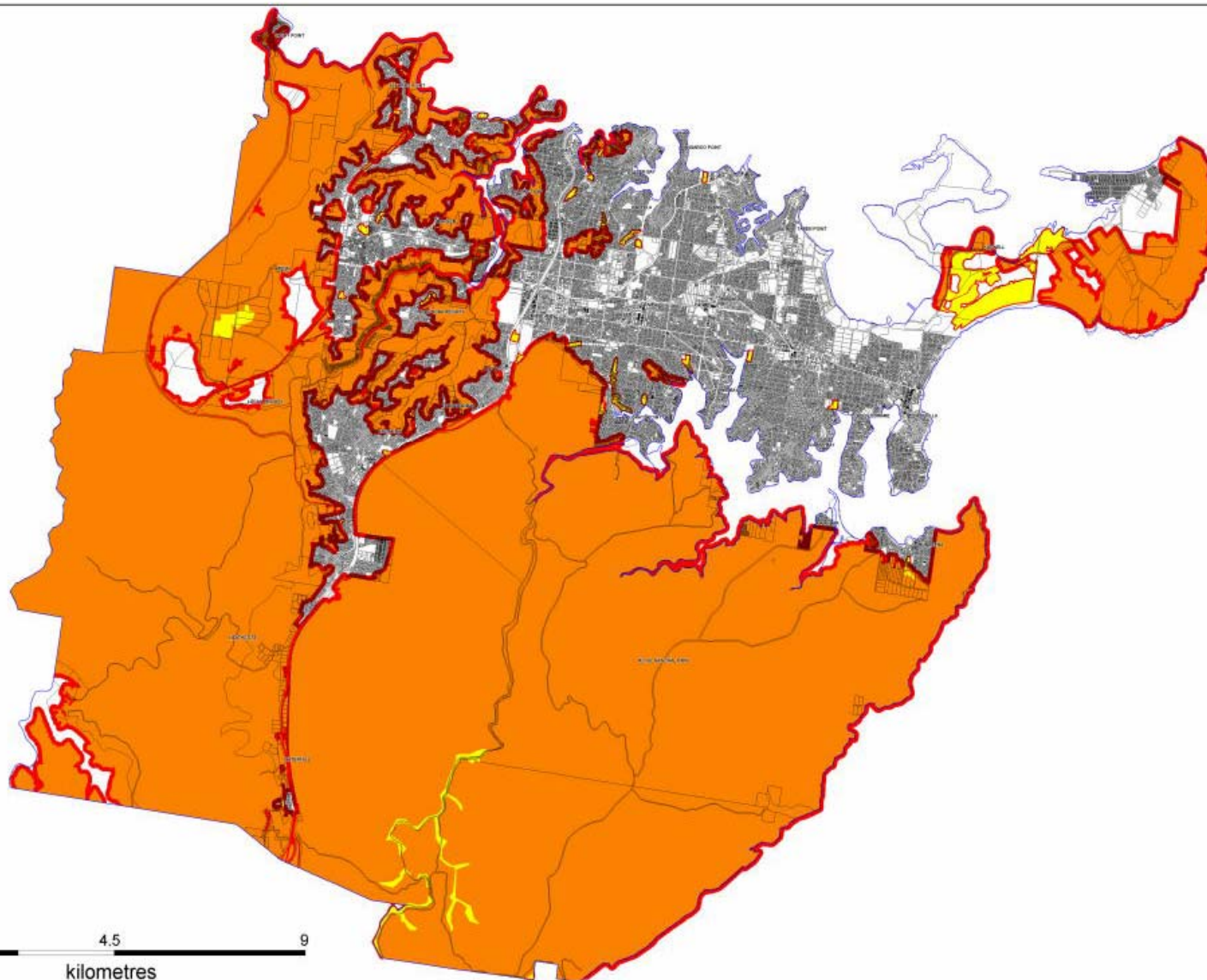


Treatment options

- In APZ areas environmental values compromised due to priority for life protection
- Treatments likely to exceed desired fire frequency thresholds
- Often adjoining nature reserves or national park – conflicting objectives

- 
- Managing the fuel
 - Appropriate integrated risk planning
 - **Land use planning**

- 
- Difficult and complex area
 - Lots of \$ involved
 - Constant pressure from developers
 - Lobbying
 - Need a strong legislative basis
 - Must be evidenced based and not adhoc



Certification

For the Purposes of Section 140 (2) of the
Environmental Planning and Assessment Act 1979,
this map is hereby certified as being a Bush Fire
Prone Land Map for the Local Government Area
of Sutherland in NSW.

Philip Christian Koppert AD, JP SM, BSM
Commissioner
NSW Rural Fire Service

Date _____

0 4.5 9
kilometres

Sutherland LGA ~ Bush Fire Prone Land Map



Produced by the
GIS Services Unit
5th November 2003

Data supplied by various Stakeholders under ANZLIC Guidelines.

The information contained herein has been provided in good faith.
Effort has been made to ensure its accuracy and completeness.
The Stakeholders take no responsibility for errors or omissions nor any
loss or damage that may result from the use of this information.

*Australia New Zealand Land Information Council.



BUSH FIRE PRONE LAND MAP - LEGEND

- Bush Fire Prone Land ~ Vegetation Category 1
- Bush Fire Prone Land ~ Vegetation Category 2
- Bush Fire Prone Land ~ Vegetation Buffer - 100m & 30m
- LGA Boundaries



Planning and Building

- **At the Zoning/ Planning Stage**
 - Local Plans: ensure new zonings and land-uses take account of bush fire protection issues up front
- **At the Sub-division**
 - Consideration of bush fire issues at inception
 - Ensure adequate setbacks, access, water supplies
- **At the Building Stage**
 - Often existing pattern of development
 - Ensure building materials meet applicable building standards
 - Outcome focussed but must not increase risk, potential for engineered solutions



Image © 2010 Sinclair Knight Merz

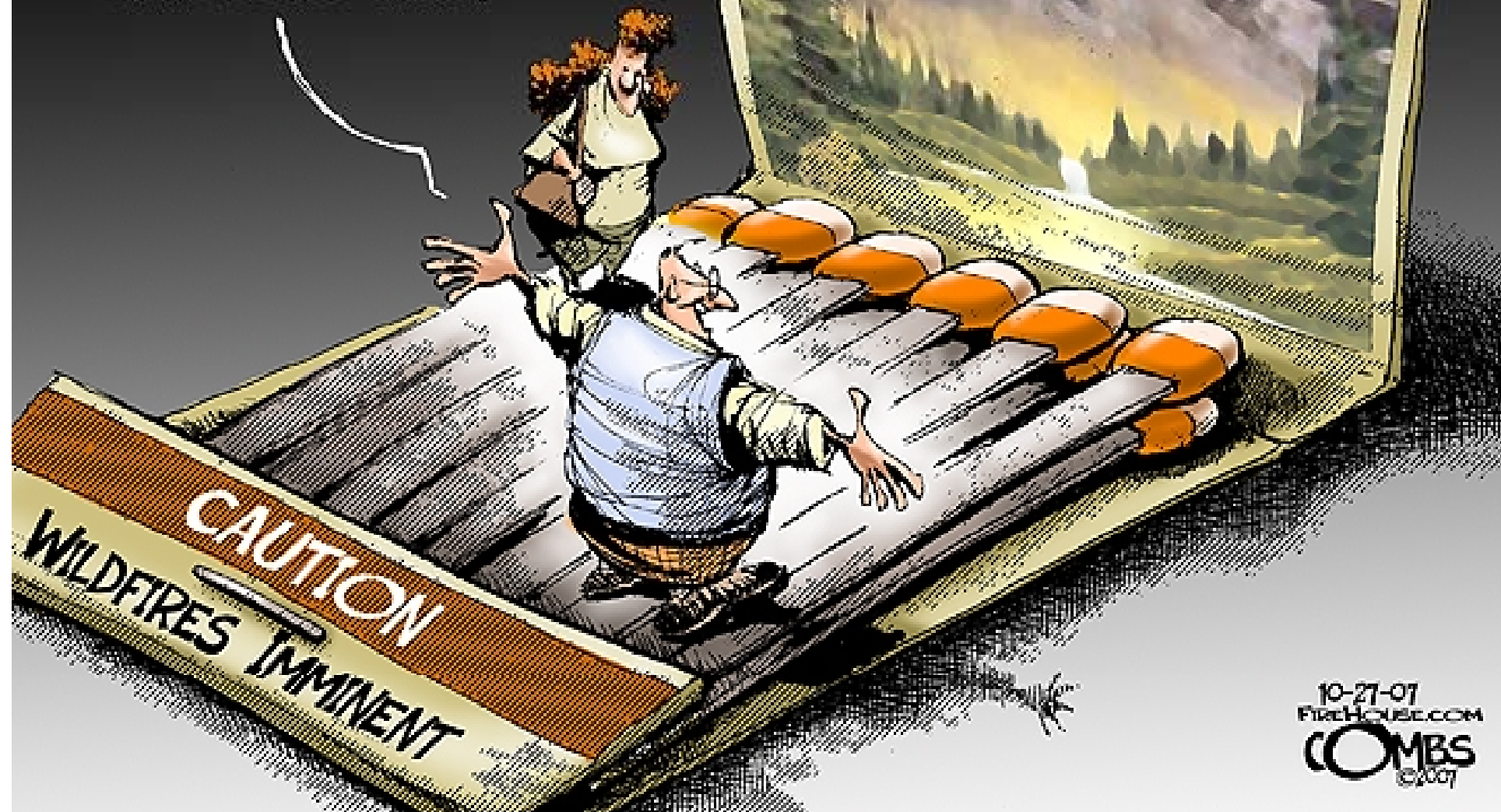
33°43'51.58" S 151°13'26.72" E elev 158 m

Go

Eye alt

WHAT COULD
POSSIBLY
HAPPEN IN SUCH
A BEAUTIFUL PLACE -
WE'LL BUILD HERE!

Tinderbox Valley



10-27-07
FIREHOUSE.COM
COMBS
©2007